

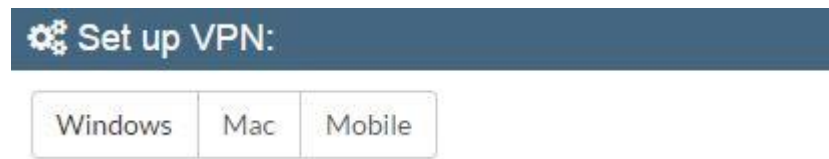
How to Connect U-Drive from Your Home Computer

Install the Pulse Secure Client by clicking the link below or by opening a browser and going to:

<http://its.uark.edu/personal/vpn/>

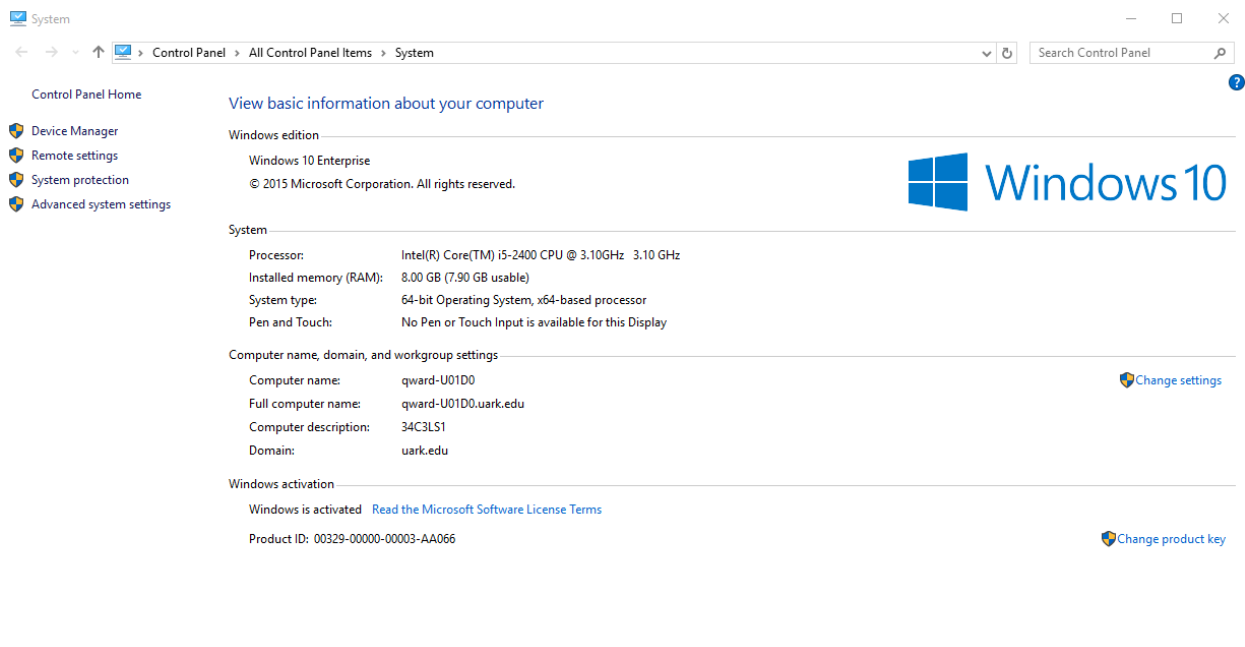


Select Windows



Follow the instructions provided on screen

To determine if you need the 32-bit or 64 bit installer, right click on Computer (Windows 7) or This PC (Windows 8 and Windows 10). Select properties. Under System you will see System Type.



VPN: Windows Setup

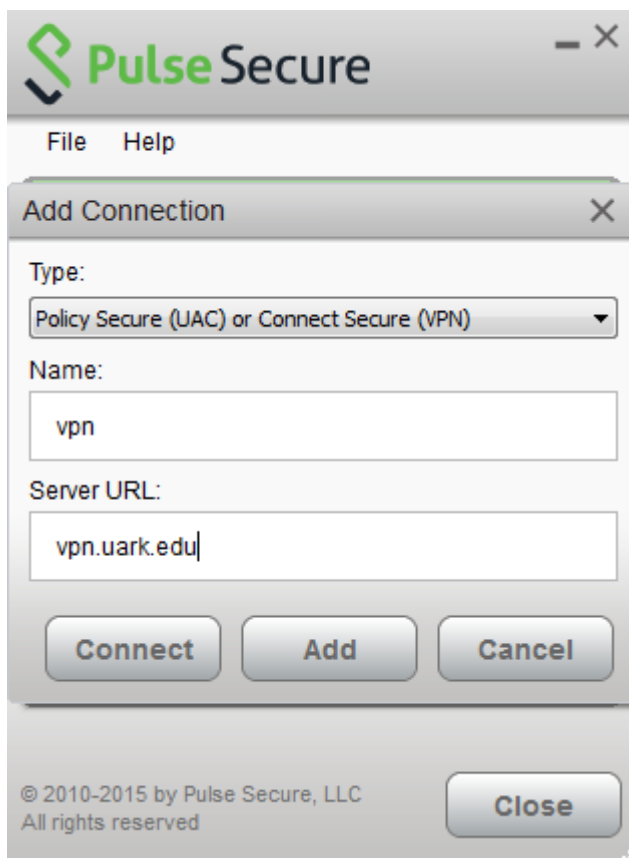
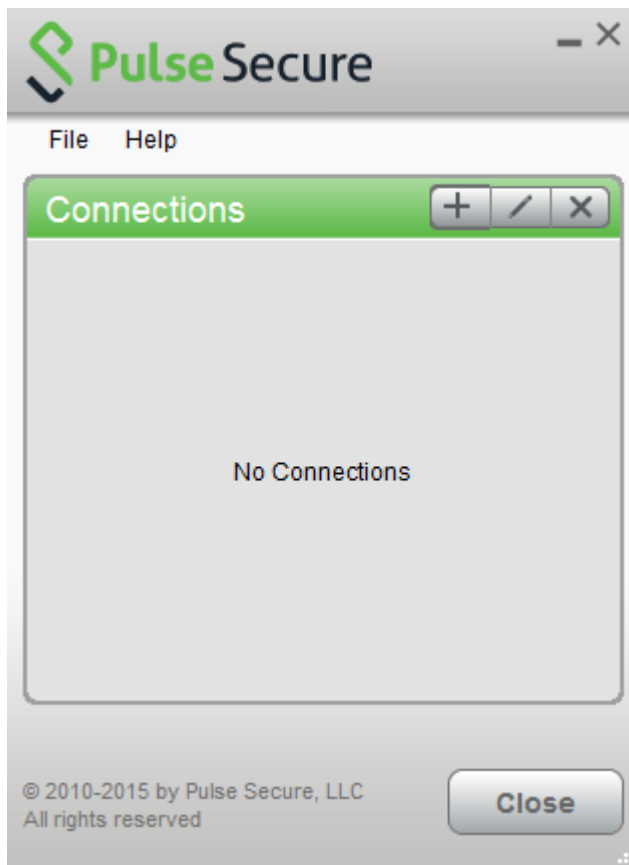
Install Pulse Secure to connect to the University of Arkansas [virtual private network](#) (VPN) or University Libraries VPN using Windows.

1. Click to download the appropriate installer for your computer.
 - [Junos Pulse installer for 32-bit](#)
 - [Junos Pulse installer for 64-bit](#)
2. When prompted, choose to run the Junos Pulse installer.
3. When installation is complete, click the Pulse Secure icon in the Windows icon tray to open the application.
4. Click the plus (+) icon to add a new connection.
5. In the Name field, enter a description for the connection, for example, UARK VPN or Library VPN.
6. In the Server URL field, enter `vpn.uark.edu`.
Note: To connect to the University Libraries VPN, enter `vpn.uark.edu/library`.
7. Click Add. The new connection should appear in the Connections list.
8. Select the VPN and click Connect.
9. Enter your UARK username and password and check the Save settings box.
10. Click Connect to start a VPN session. To end a session, click Disconnect in the main Pulse Secure window.

Now you should have this icon in your notification bar. This indicates you are connected to the University's UARK network.



This is the box you will see when you open Pulse Secure. Click the + to add a connection.





Connect to: vpn

User Name:

qward

Password:

.....

Save settings

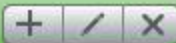
Connect

Cancel



File Help

Connections



▶ UARK_VPN (vpn.uark.edu)
Connected

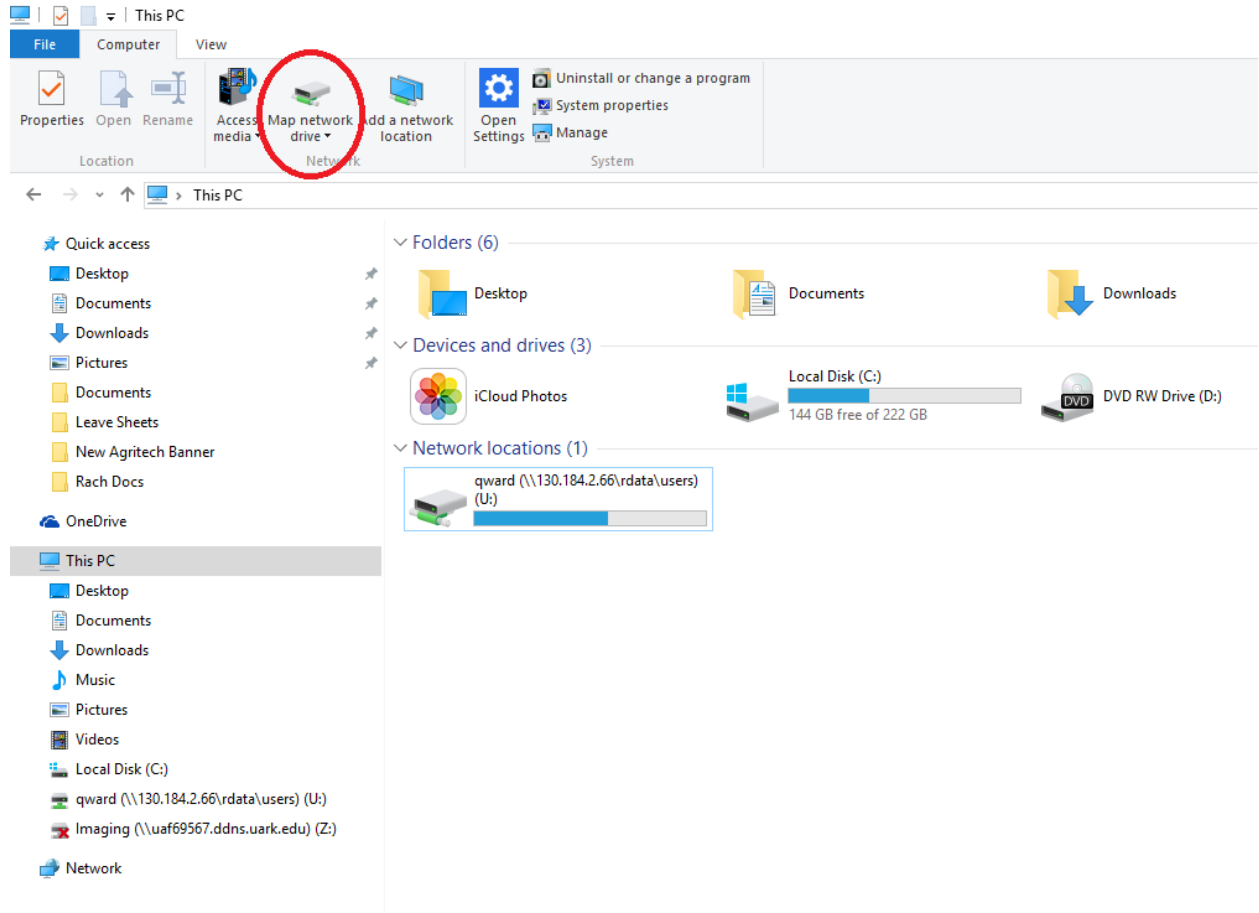


Disconnect

© 2010-2015 by Pulse Secure, LLC
All rights reserved

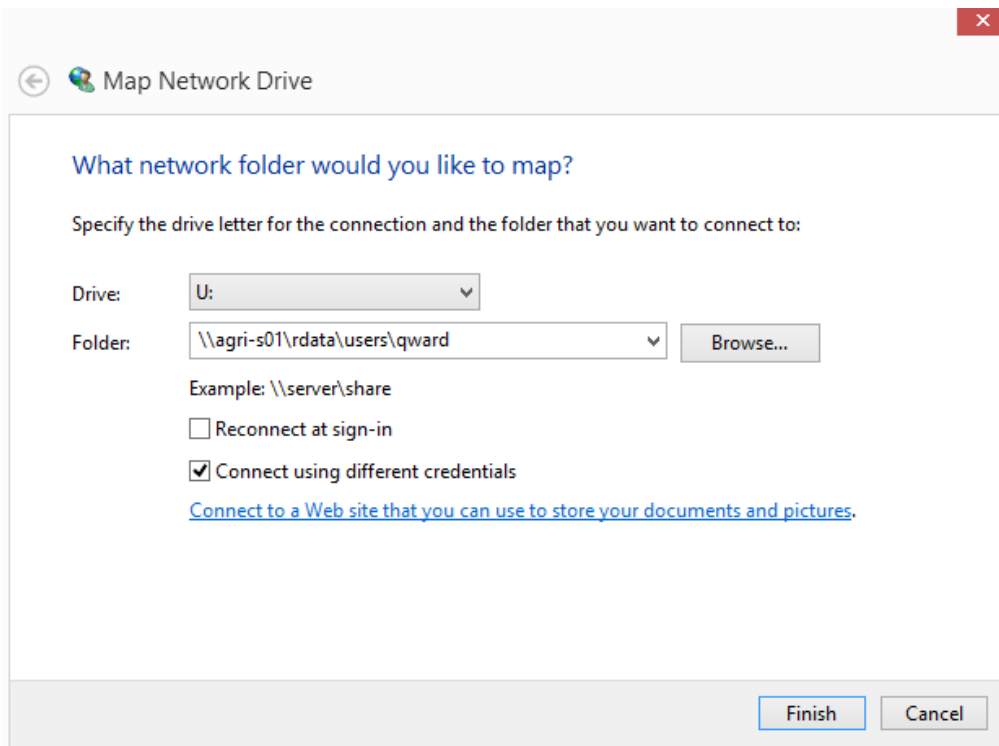
Close

Next go to the file explorer, “This PC” and click Map Network Drive at the top or and **right click** “This PC” and select “map network drive”.

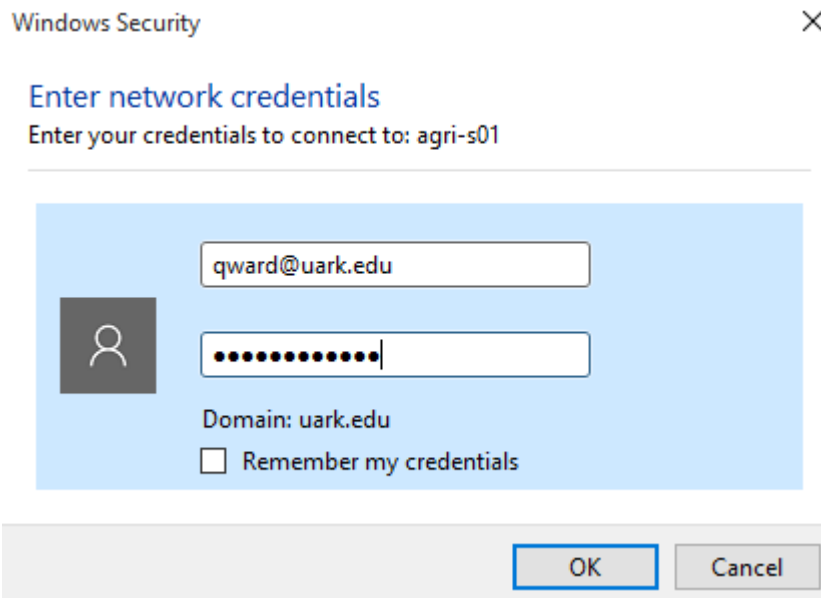


The map a network drive window will appear, you will need to type in the drive location as follows: `\\agri-s01\rdata\users\your UARK user name`

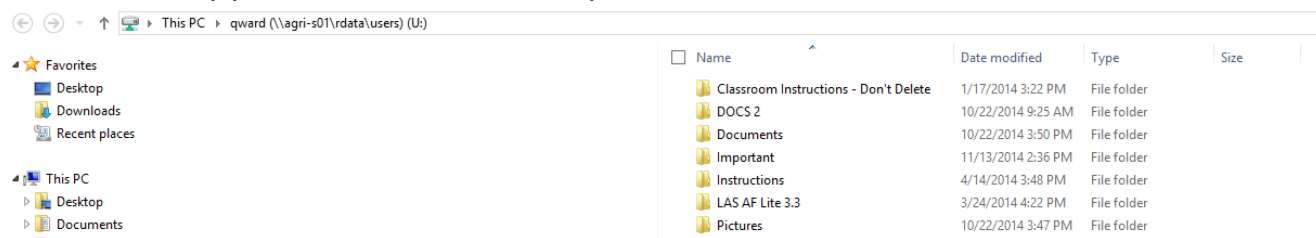
Be sure to check the box **connect using different credentials**.



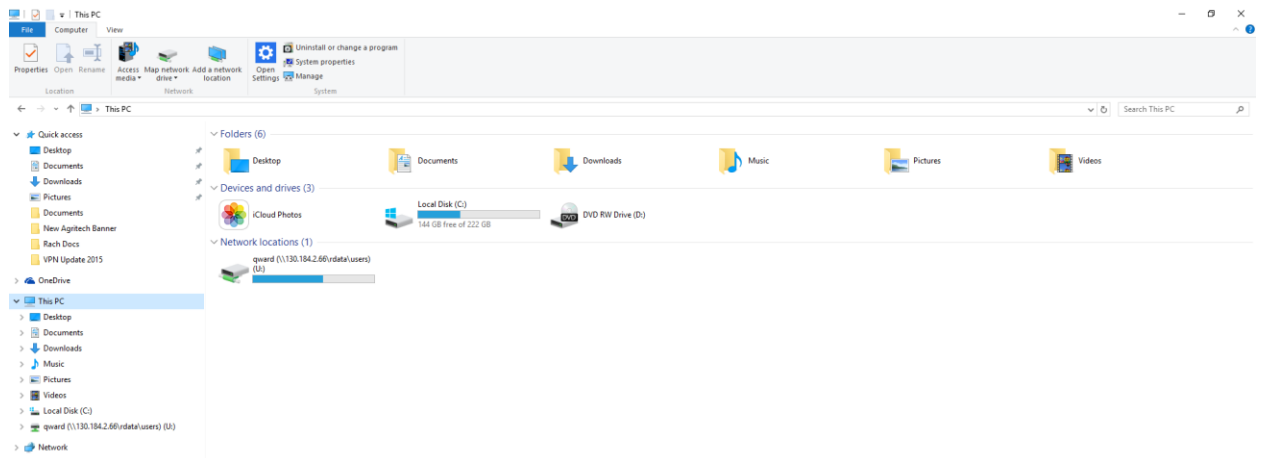
Type in your full UARK email address eg. qward@uark.edu and your UARK email password.



Your files should appear, these are from your U-drive!



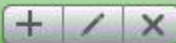
You can also find your drive located in your computer under network locations.



To disconnect click the up arrow at the bottom right corner, click the VPN Pulse Secure icon and disconnect and close.



Connections



▶ UARK_VPN (vpn.uark.edu)
Connected



Disconnect